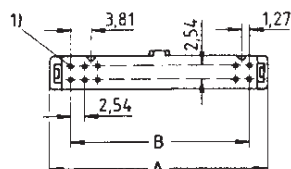
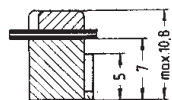
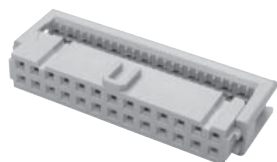


IDC Connectors

FL Series



Flat cable socket for cable with pitch 1,27mm, grey, precise. Pitch=2,54mm
Max.current 1A
Test voltage 1000V
Operating temperature -55°C to +125°C
Contact resistance < 20 mOhm
Golden plated contacts and tinned outlets
(IDC = Insulation Displacement Connector system)



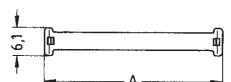
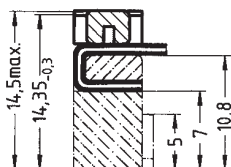
Part No.	A [mm]	B [mm]
FL 06-pin	12,2	5,08
FL 10-pin	17,3	10,16
FL 14-pin	22,4	15,24
FL 16-pin	24,9	17,78
FL 20-pin	30	22,86
FL 26-pin	37,6	30,48
FL 34-pin	47,8	40,64
FL 40-pin	55,4	48,26
FL 50-pin	68,1	60,96
FL 60-pin	80,8	73,66

Part No.	Part Number	Description
FL 06	09 18 506 7803	IDC female connector 2x3P
FL 10	09 18 510 7803	IDC female connector 2x5P
FL 14	09 18 514 7803	IDC female connector 2x7P
FL 16	09 18 516 7803	IDC female connector 2x8P
FL 20	09 18 520 7803	IDC female connector 2x10P
FL 26	09 18 526 7803	IDC female connector 2x13P
FL 34	09 18 534 7803	IDC female connector 2x17P
FL 40	09 18 540 7803	IDC female connector 2x20P
FL 50	09 18 550 7803	IDC female connector 2x25P
FL 60	09 18 560 7803	IDC female connector 2x30P
FL 64	09 18 564 7803	IDC female connector 2x32P

Part No.	Ord.No.
S FL 06	25556
S FL 10	25557
S FL 14	25558
S FL 16	25559
S FL 20	25560
S FL 26	25561
S FL 34	25562
S FL 40	25563
S FL 50	25564
O FL 60	25565
O FL 64	25566

FLZ Series

Female strain relief for FL connectors. Securely connectors against self-disassembling.



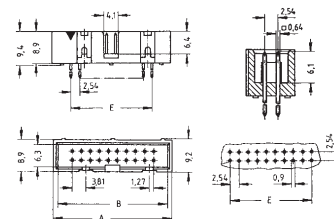
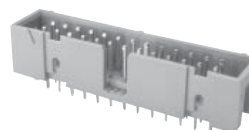
Part No.	A [mm]
FLZ 06	12,2
FLZ 10	17,3
FLZ 14	22,4
FLZ 16	24,9
FLZ 20	30
FLZ 26	37,6
FLZ 34	47,8
FLZ 40	55,4
FLZ 50	68,1

Part No.	Part Number	Description
FLZ 06	09 18 506 9002	Female strain relief clamp for FL06
FLZ 10	09 18 510 9002	Female strain relief clamp for FL10
FLZ 14	09 18 514 9002	Female strain relief clamp for FL14
FLZ 16	09 18 516 9002	Female strain relief clamp for FL16
FLZ 20	09 18 520 9002	Female strain relief clamp for FL20
FLZ 26	09 18 526 9002	Female strain relief clamp for FL26
FLZ 34	09 18 534 9002	Female strain relief clamp for FL34
FLZ 40	09 18 540 9002	Female strain relief clamp for FL40
FLZ 50	09 18 550 9002	Female strain relief clamp for FL50

Part No.	Ord.No.
S FLZ 06	25567
S FLZ 10	25568
S FLZ 14	25569
S FLZ 16	25570
S FLZ 20	25571
S FLZ 26	25572
S FLZ 34	25573
S FLZ 40	25574
S FLZ 50	25575

MLWxxG Series

IDC male headers for PCB, straight. Pitch=2,54mm, max.current 1A, test voltage 1000V, operating temperature -55°C to +125°C, contact resistance < 20 mOhm. Golden plated contacts and tinned outlets.



Part No.	A [mm]	B [mm]	E [mm]
MLW 06G	15,2	12,78	5,08
MLW 10G	20,3	17,86	10,16
MLW 14G	25,4	22,94	15,24
MLW 16G	27,9	25,48	17,78
MLW 20G	33	30,56	22,86
MLW 26G	40,6	38,18	30,48
MLW 34G	50,8	48,34	40,64
MLW 40G	58,4	55,96	48,26
MLW 50G	71,3	68,66	60,96

Part No.	Part Number	Description
MLW 06G	09 18 506 7324	IDC male header for PCB 2x3P straight
MLW 10G	09 18 510 7324	IDC male header for PCB 2x5P straight
MLW 14G	09 18 514 7324	IDC male header for PCB 2x7P straight
MLW 16G	09 18 516 7324	IDC male header for PCB 2x8P straight
MLW 20G	09 18 520 7324	IDC male header for PCB 2x10P straight
MLW 26G	09 18 526 7324	IDC male header for PCB 2x13P straight
MLW 34G	09 18 534 7324	IDC male header for PCB 2x17P straight
MLW 40G	09 18 540 7324	IDC male header for PCB 2x20P straight
MLW 50G	09 18 550 7324	IDC male header for PCB 2x25P straight

Part No.	Ord.No.
S MLW 06G	26381
S MLW 10G	20041
S MLW 14G	20042
S MLW 16G	20043
S MLW 20G	20044
S MLW 26G	20045
S MLW 34G	20046
S MLW 40G	20047
S MLW 50G	20048